

# CHURCH PROPERTY FOR SALE

14,987± SF



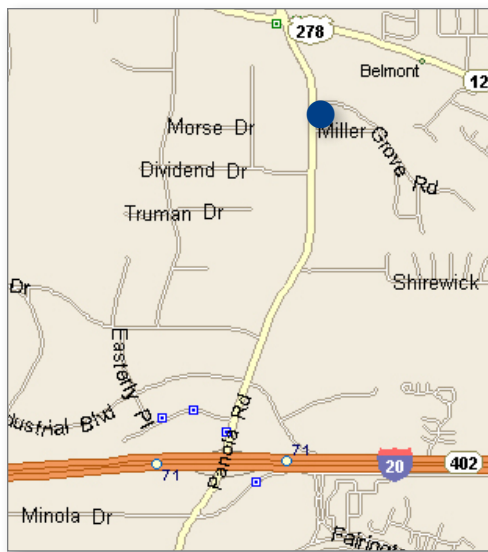
CNL Specialty Real Estate Services Corp.



Asking Price \$1,295,000

2418 Panola Rd - Lithonia, GA 30058

- 2.5768± acres
- 13,512± sq. ft. church bldg
  - Built in 1982
  - Sanctuary seats 275±
  - Fellowship hall with kitchen
  - Classrooms & offices
- 1,475± sq. ft. 3bd/2ba residence
  - Built in 1988
- 117± Parking spaces
- Zoned R-100, DeKalb County
- Excellent access to I-20



**For additional information please contact:**

**WILLIAM PALASKI**

*Associate*

770.446.2910

bill.palaski@cnl.com

**MATTHEW MESSIER,  
SIOR, CCIM**

*Principal*

407.540.7718

matt.messier@cnl.com

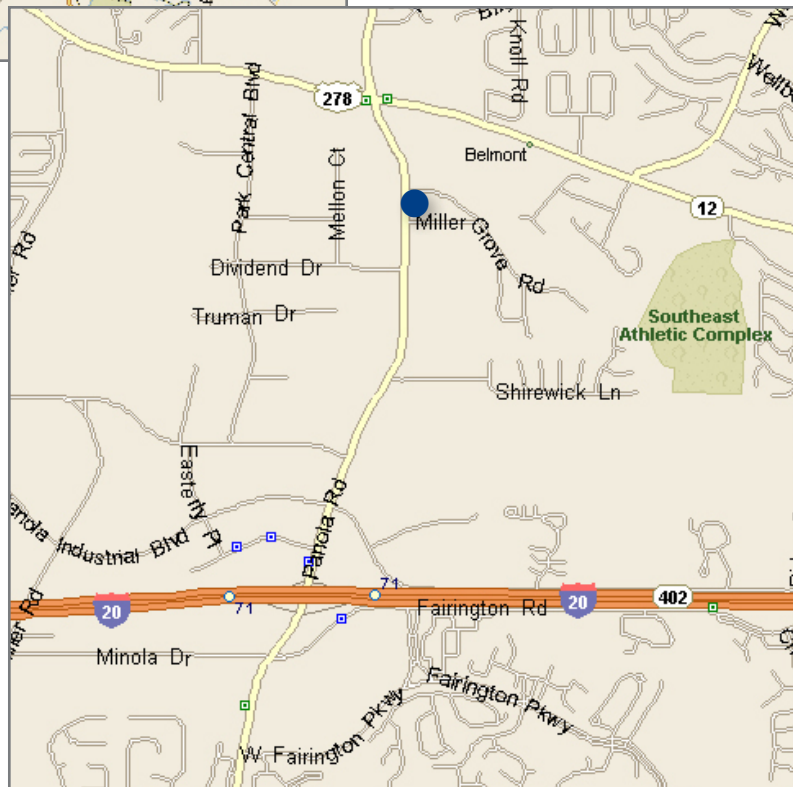
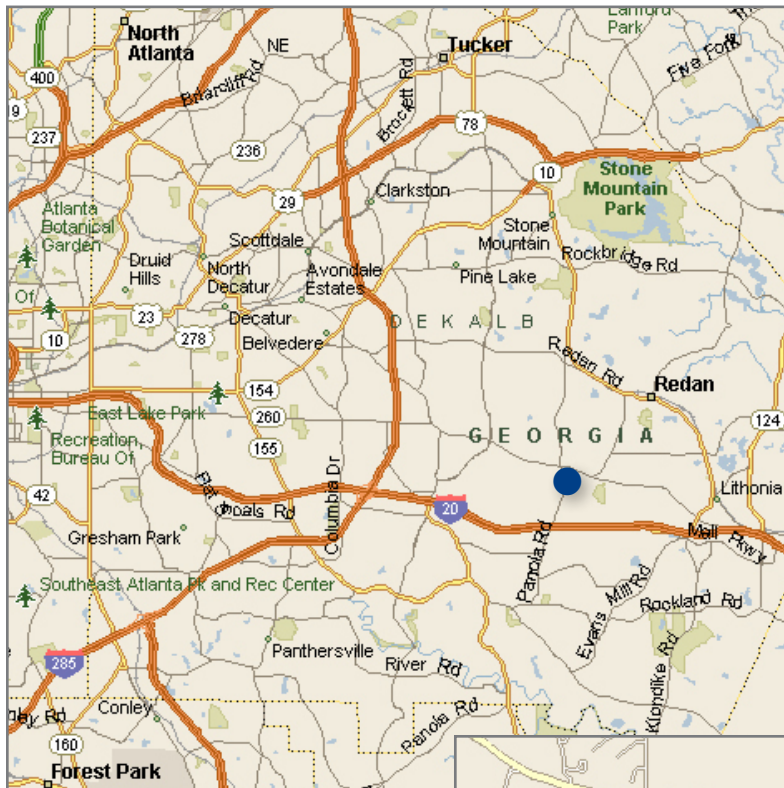
*Licensed Real Estate Broker®*

420 South Orange Avenue  
Suite 950  
Orlando, FL 32801  
800.400.5505  
fax 407.540.7750

*Atlanta Office Address:*  
6755 Peachtree Industrial Blvd.  
Suite 230  
Atlanta, GA 30360  
770.446.2910  
fax 770.446.2921

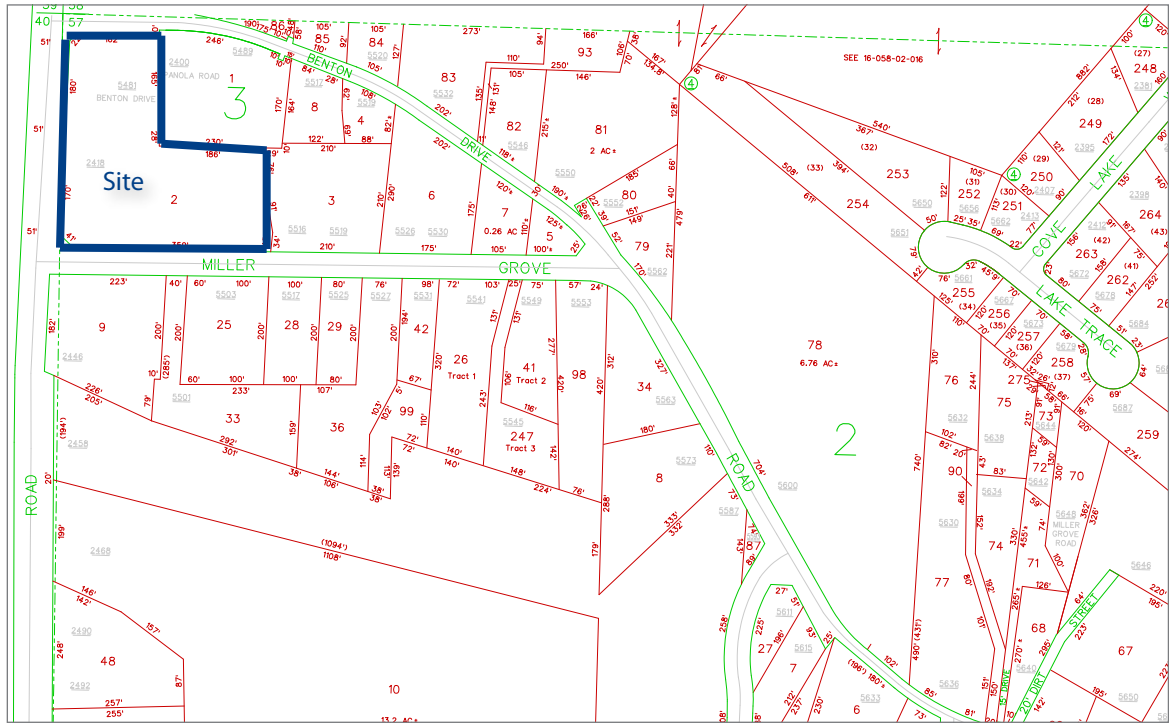
Although all information is furnished regarding for sale, rental or financing is from sources we deem reliable, such information has not been verified and no express representation is made nor is any to be implied as to the accuracy thereof, and it is submitted subject to errors, omissions, changes of price, rental or other conditions, prior sale, lease or financing, or withdrawal without notice.

*To browse our entire portfolio of available properties visit:*  
[www.cnl.com/specialty](http://www.cnl.com/specialty)



## Location

Although all information is furnished regarding for sale, rental or financing is from sources we deem reliable, such information has not been verified and no express representation is made nor is any to be implied as to the accuracy thereof, and it is submitted subject to errors, omissions, changes of price, rental or other conditions, prior sale, lease or financing, or withdrawal without notice.



Plat



Aerial



## Interior/Exterior Photos