

CHURCH PROPERTY FOR SALE

23,000 ± SF 2.73 ± acres



CNL Specialty Real Estate Services Corp.

PRICED BELOW APPRAISED VALUE



Asking Price \$974,000

Reduced to \$795,000

816 LaBarge Drive . Bessemer, AL 35023

- 2.73 ± acres of land
- 23,000 ± Total SF (2 bldgs)
 - 1) 15,000 ± SF Sanctuary & Ed Bldg
 - 2) 8,000 ± SF Gymnasium
- Sanctuary & Ed Bldg built in 1997
- Gymnasium built in 2000
- Zoned Inst-1
- Public gas and water
- Septic tank
- ADT alarm
- Multiple classrooms and offices
- Ample parking
- **OWNER FINANCING AVAILABLE TO QUALIFIED BUYERS**



For additional information please contact:

MATTHEW D. MESSIER,
SIOR, CCIM

Principal

407.540.7718

matt.messier@cnl.com

Licensed Real Estate Broker®

420 South Orange Avenue
Suite 950
Orlando, FL 32801
800.400.5505
fax 407.540.7750

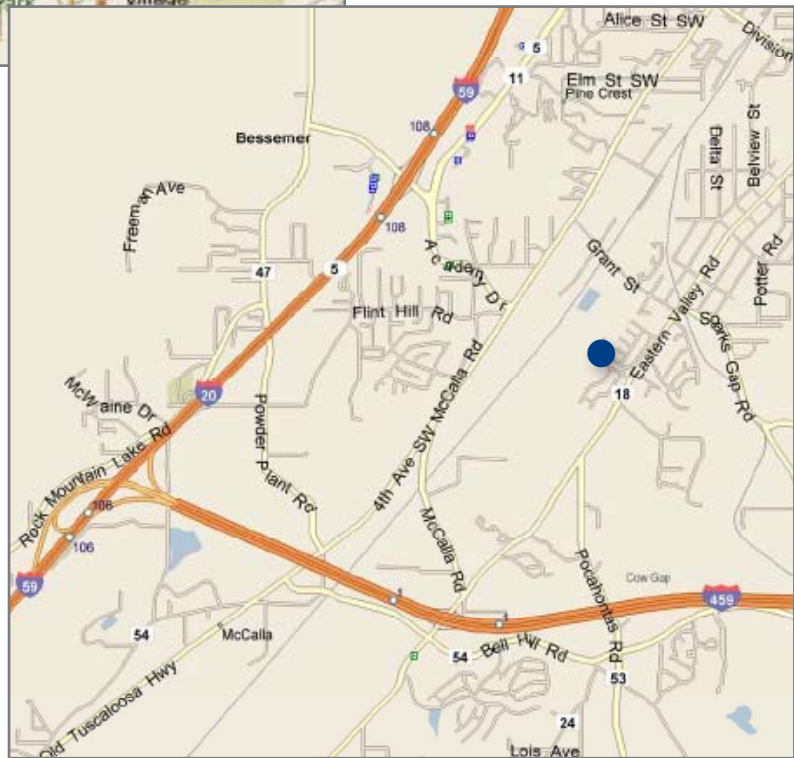
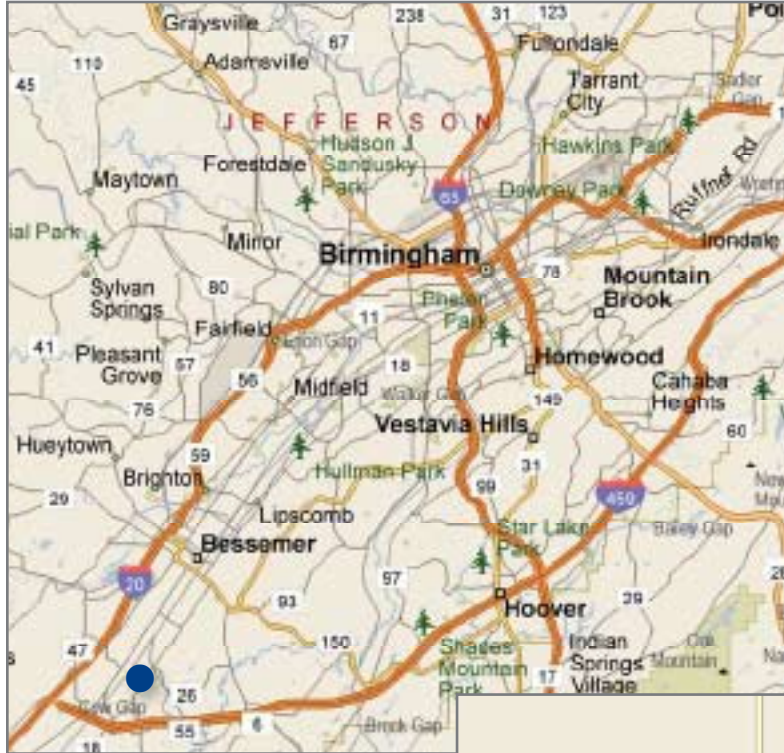
Although all information is furnished regarding for sale, rental or financing is from sources we deem reliable, such information has not been verified and no express representation is made nor is any to be implied as to the accuracy thereof, and it is submitted subject to errors, omissions, changes of price, rental or other conditions, prior sale, lease or financing, or withdrawal without notice.

To browse our entire portfolio of available properties visit:

www.cnl.com

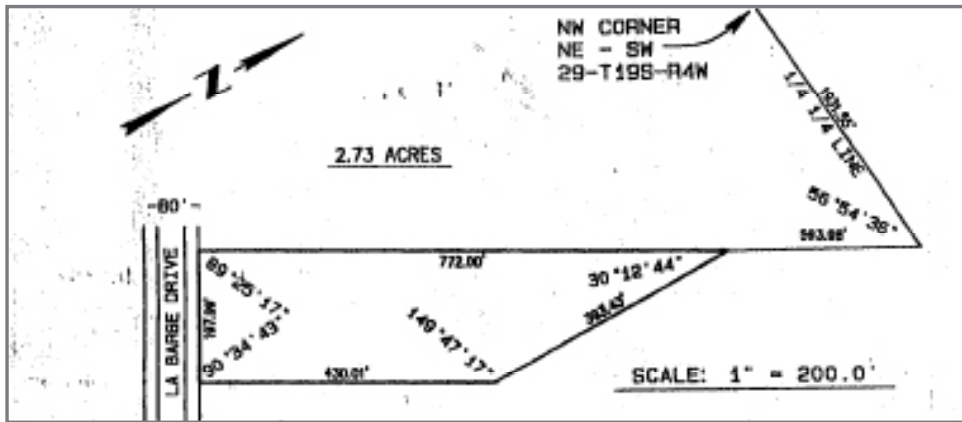
CHURCH PROPERTY FOR SALE

23,000 ± SF 2.73 ± acres

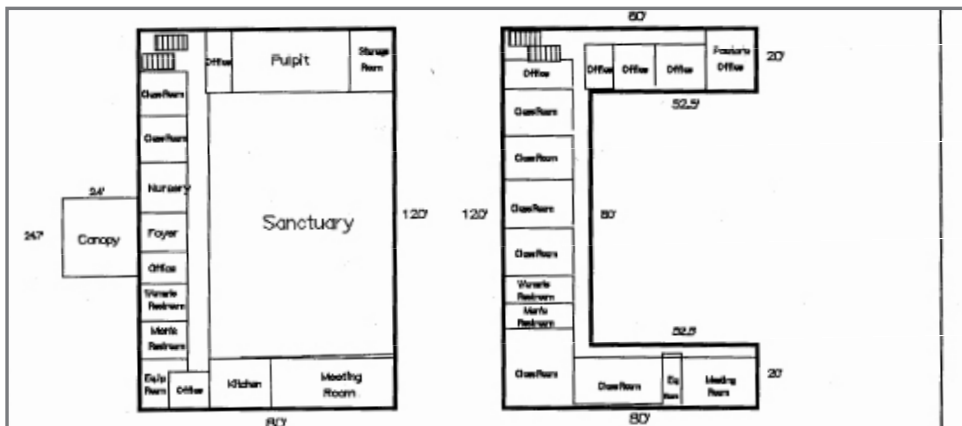


Location

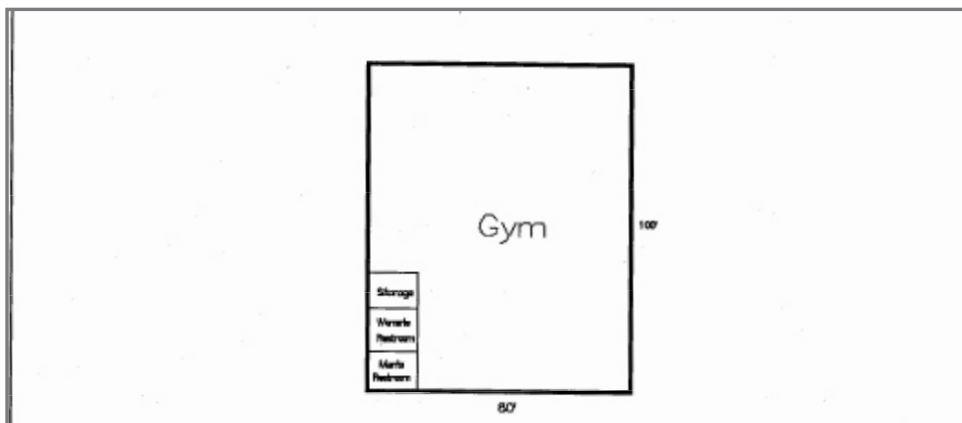
Although all information is furnished regarding for sale, rental or financing is from sources we deem reliable, such information has not been verified and no express representation is made nor is any to be implied as to the accuracy thereof, and it is submitted subject to errors, omissions, changes of price, rental or other conditions, prior sale, lease or financing, or withdrawal without notice.



Survey



Sanctuary & Educational Bld Floor Plan



Gymnasium Floor Plan