

# CHURCH PROPERTY FOR SALE

3,326± SF



CNL Specialty Real Estate Services Corp.



Asking Price \$195,000

2108 Thonotosassa Rd - Plant City, FL 33563

- 2.31± acres of land
- 1,646± sq. ft. church  
Built in 1967  
Sanctuary
- 1,680± sq. ft. modular office  
Built in 1985
- Monumental signage
- Ample grass parking
- Zoned R-2, Plant City
- Excellent access to I-4



**For additional  
information  
please contact:**

**JOEY BLAKLEY**

*Associate Broker*

407.540.7737

joey.blakley@cnl.com

**NICHOLAS MCKINNEY**

*Principal*

407.540.7720

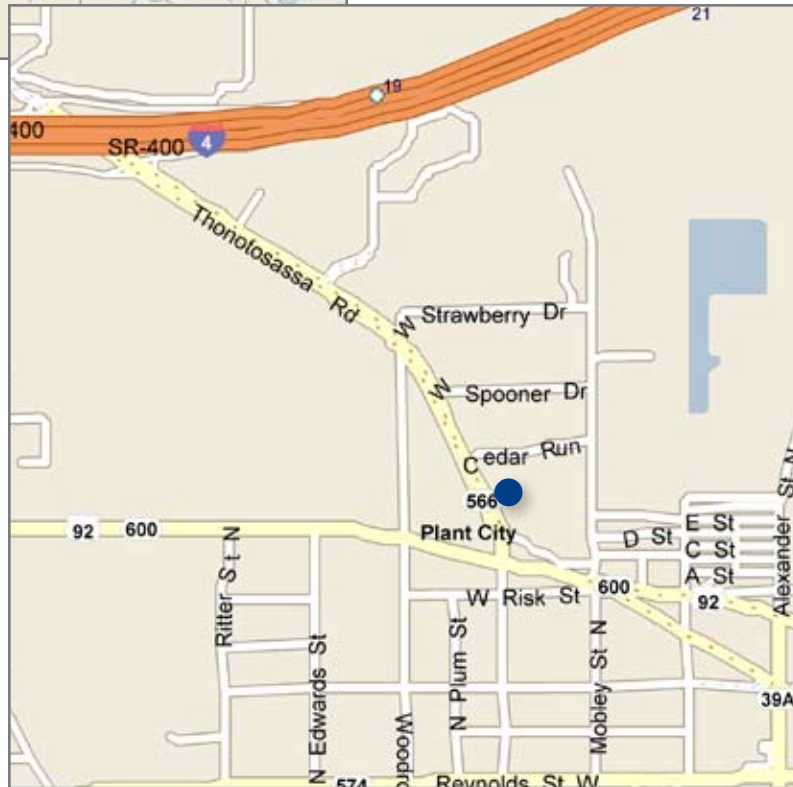
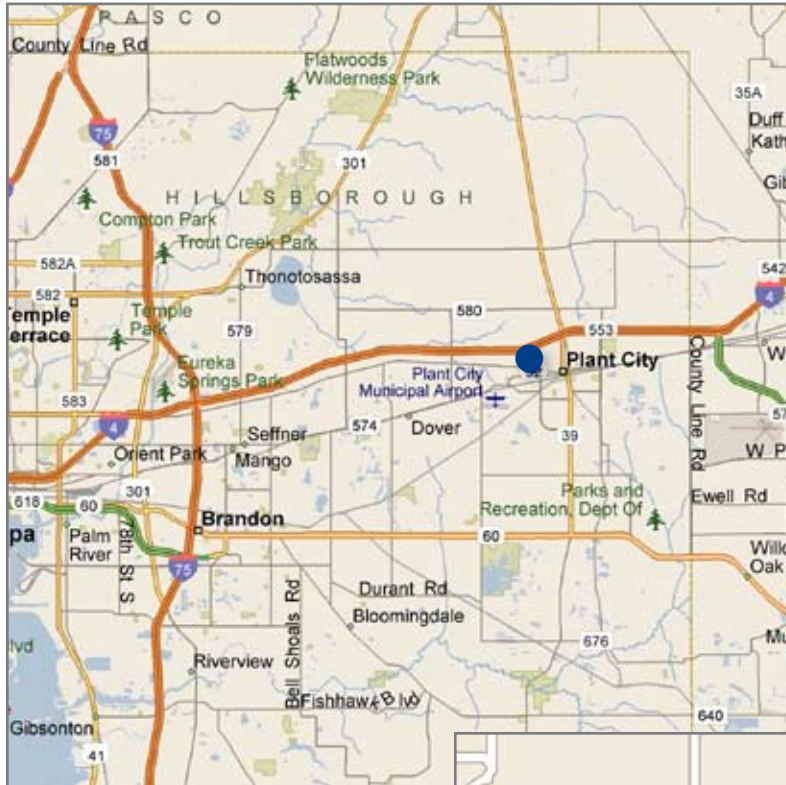
nick.mckinney@cnl.com

*Licensed Real Estate Broker®*

420 South Orange Avenue  
Suite 950  
Orlando, FL 32801  
800.400.5505  
fax 407.540.7750

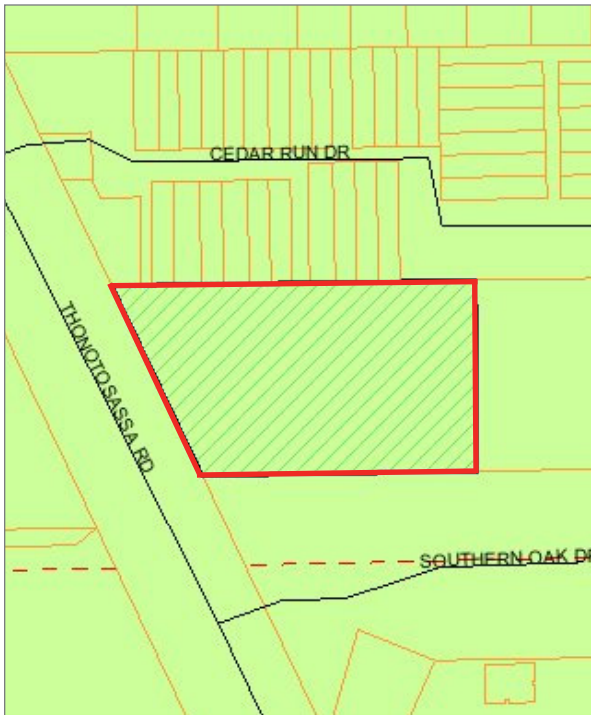
Although all information is furnished regarding for sale, rental or financing is from sources we deem reliable, such information has not been verified and no express representation is made nor is any to be implied as to the accuracy thereof, and it is submitted subject to errors, omissions, changes of price, rental or other conditions, prior sale, lease or financing, or withdrawal without notice.

*To browse our entire portfolio  
of available properties visit:  
[www.cnl.com/specialty](http://www.cnl.com/specialty)*



## Location

Although all information is furnished regarding for sale, rental or financing is from sources we deem reliable, such information has not been verified and no express representation is made nor is any to be implied as to the accuracy thereof, and it is submitted subject to errors, omissions, changes of price, rental or other conditions, prior sale, lease or financing, or withdrawal without notice.



Plat



Birds eye