

MEETING FACILITY FOR SALE

11,700± SF



CNL Specialty Real Estate Services Corp.



Asking Price \$895,000

Reduced to \$849,000

3510 NE Douglas Ave . Roseburg, OR 97470

- 2.5± acres
- Zoned Medium Industrial 2, City of Roseburg
- 11,700± total SF
- Built in 2004
- Dining hall
- Large commercial kitchen
- Cafe/Bar
- Minutes away from Interstate 5
- Paved parking
- Many potential uses



For additional information please contact:



**MATTHEW MESSIER,
SIOR, CCIM**

Principal

407.540.7718

matt.messier@cnl.com

Licensed Real Estate Broker®

420 South Orange Avenue
Suite 950
Orlando, FL 32801
800.400.5505
fax 407.540.7750

In partnership with



G. STILES REALTY

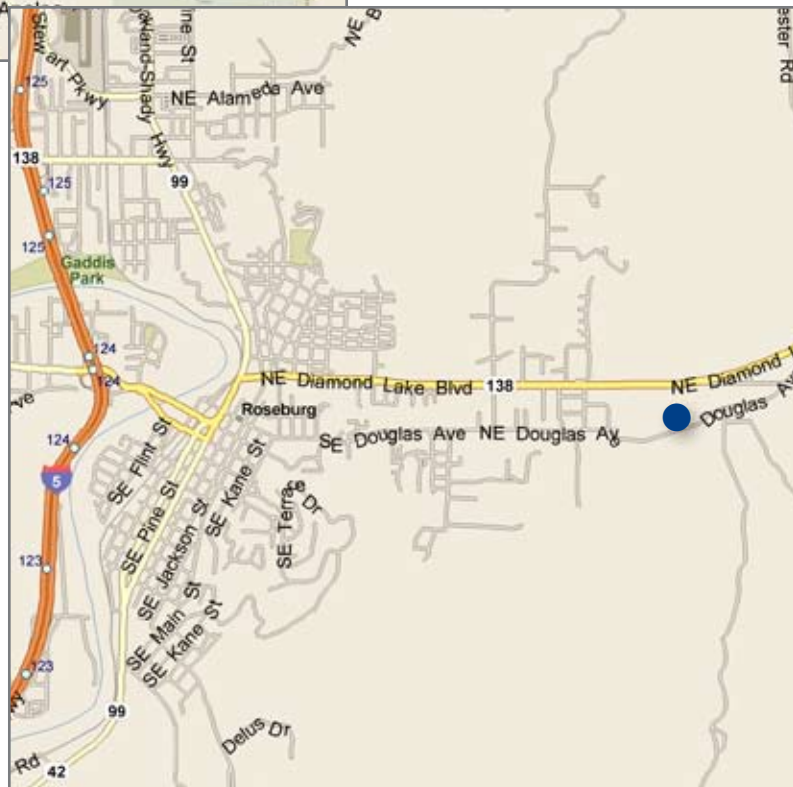
Melony Hakola

541.672.1616

melony@gstiles.com

Although all information is furnished regarding for sale, rental or financing is from sources we deem reliable, such information has not been verified and no express representation is made nor is any to be implied as to the accuracy thereof, and it is submitted subject to errors, omissions, changes of price, rental or other conditions, prior sale, lease or financing, or withdrawal without notice.

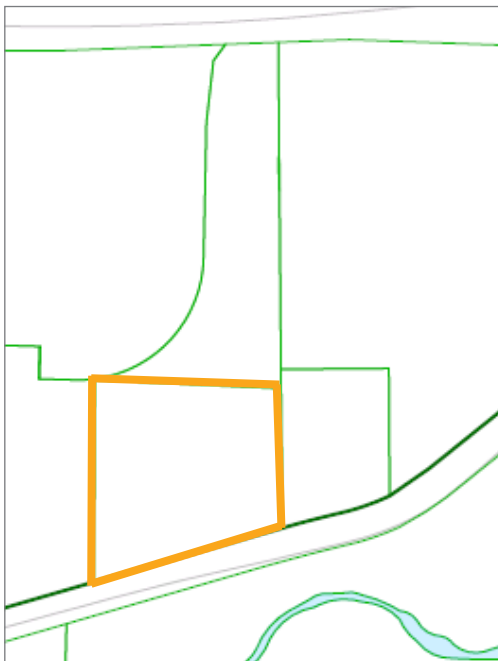
To browse our entire portfolio of available properties visit:
www.cnl.com/specialty



Location



Aerial



Plat



Exterior/ Interior Pictures