

# CHURCH PROPERTY FOR SALE

24,370± SF



CNL Specialty Real Estate Services Corp.



Asking Price ~~\$1,675,000~~

Reduced to \$1,495,000

4870 Piedmont Avenue - North Charleston, SC 29406

- 1.59± acres of land
- 6,000± sq. ft. Church bldg
- Sanctuary seats 400±
- 15,122± sq. ft. Educational bldg
- Fellowship hall
- Kitchen
- Classrooms
- Offices
- 3,248± sq. ft. Daycare bldg
- Zoned R-1
- Municipality - City of North Charleston
- Close proximity to Charleston Air Force Base
- Excellent access to I-26 & I-526



**For additional  
information  
please contact:**

**MATTHEW MESSIER,  
SIOR, CCIM**

*Principal*

407.540.7718

matt.messier@cnl.com

*Licensed Real Estate Broker®*

420 South Orange Avenue

Suite 950

Orlando, FL 32801

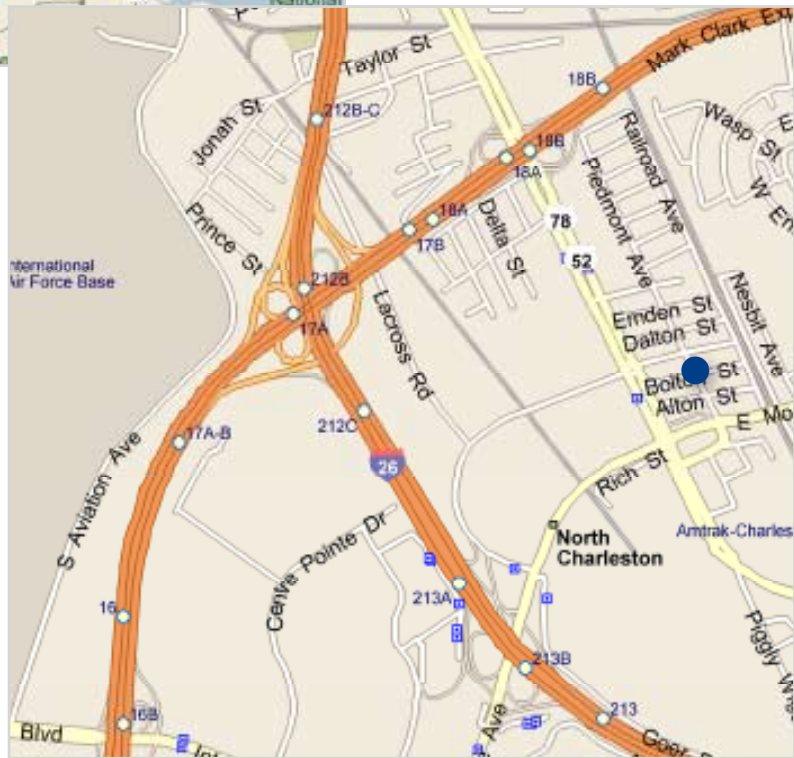
800.400.5505

fax 407.540.7750

Although all information is furnished regarding for sale, rental or financing is from sources we deem reliable, such information has not been verified and no express representation is made nor is any to be implied as to the accuracy thereof, and it is submitted subject to errors, omissions, changes of price, rental or other conditions, prior sale, lease or financing, or withdrawal without notice.

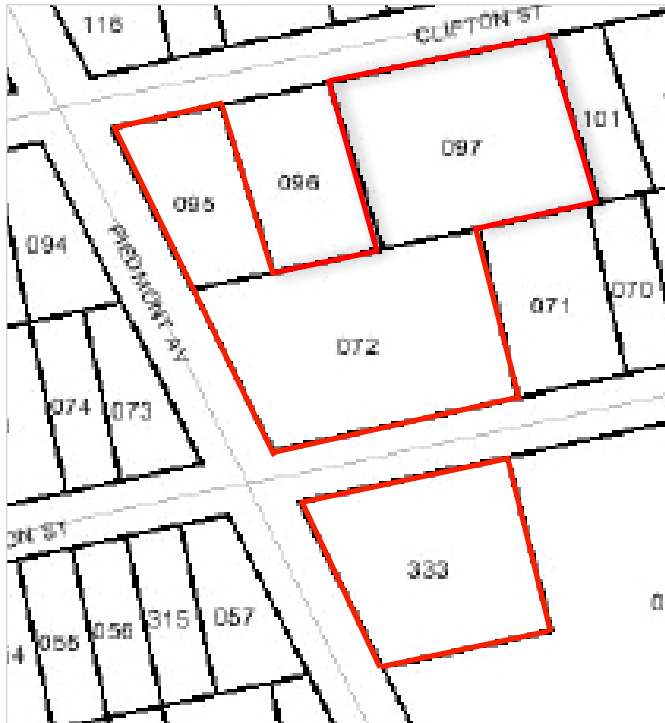
*To browse our entire portfolio  
of available properties visit:*

[www.cnl.com](http://www.cnl.com)



## Location

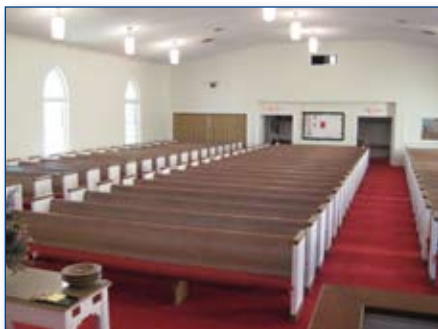
Although all information is furnished regarding for sale, rental or financing is from sources we deem reliable, such information has not been verified and no express representation is made nor is any to be implied as to the accuracy thereof, and it is submitted subject to errors, omissions, changes of price, rental or other conditions, prior sale, lease or financing, or withdrawal without notice.



Aerial



Aerial

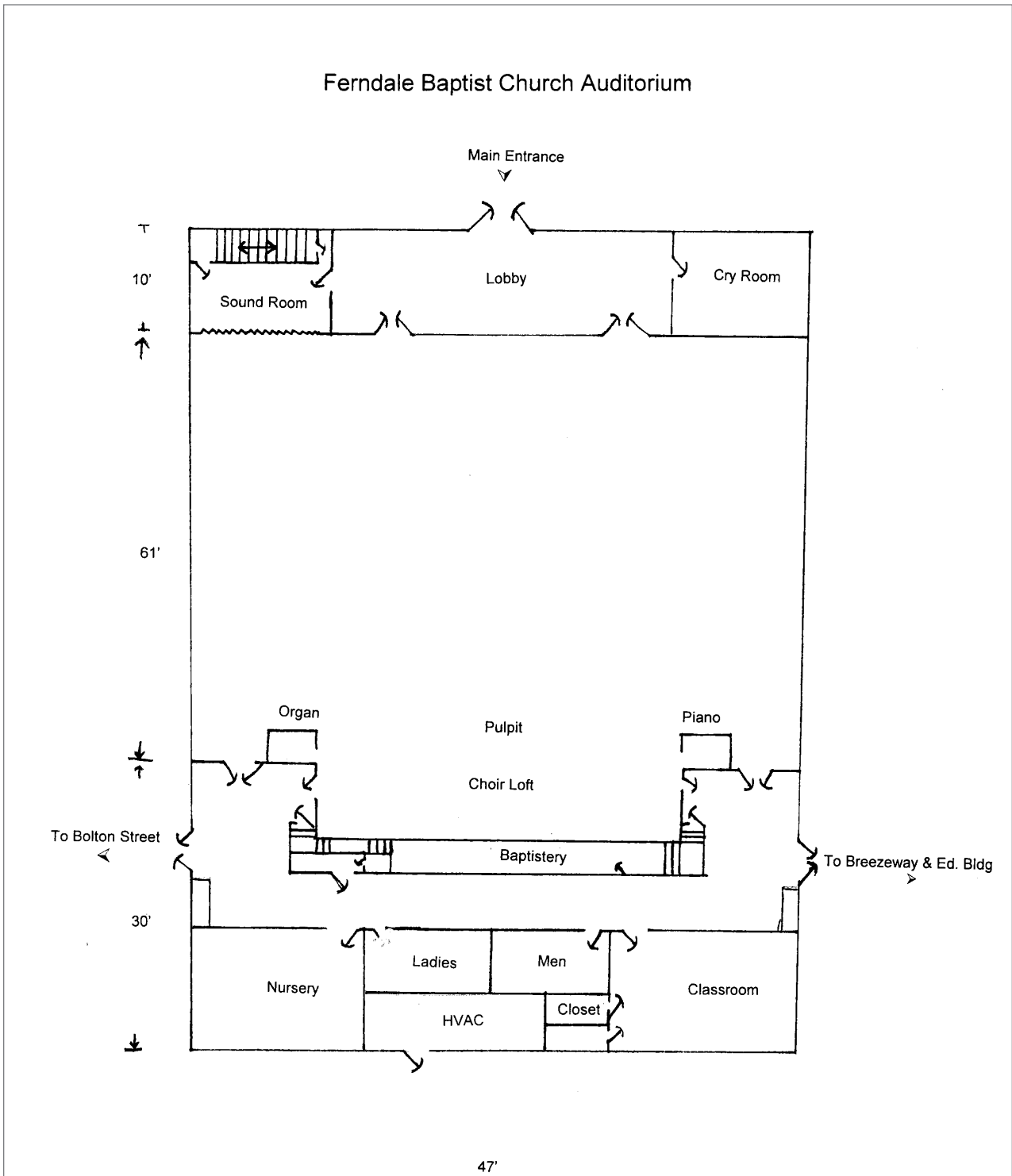


## Exterior/ Interior Pictures

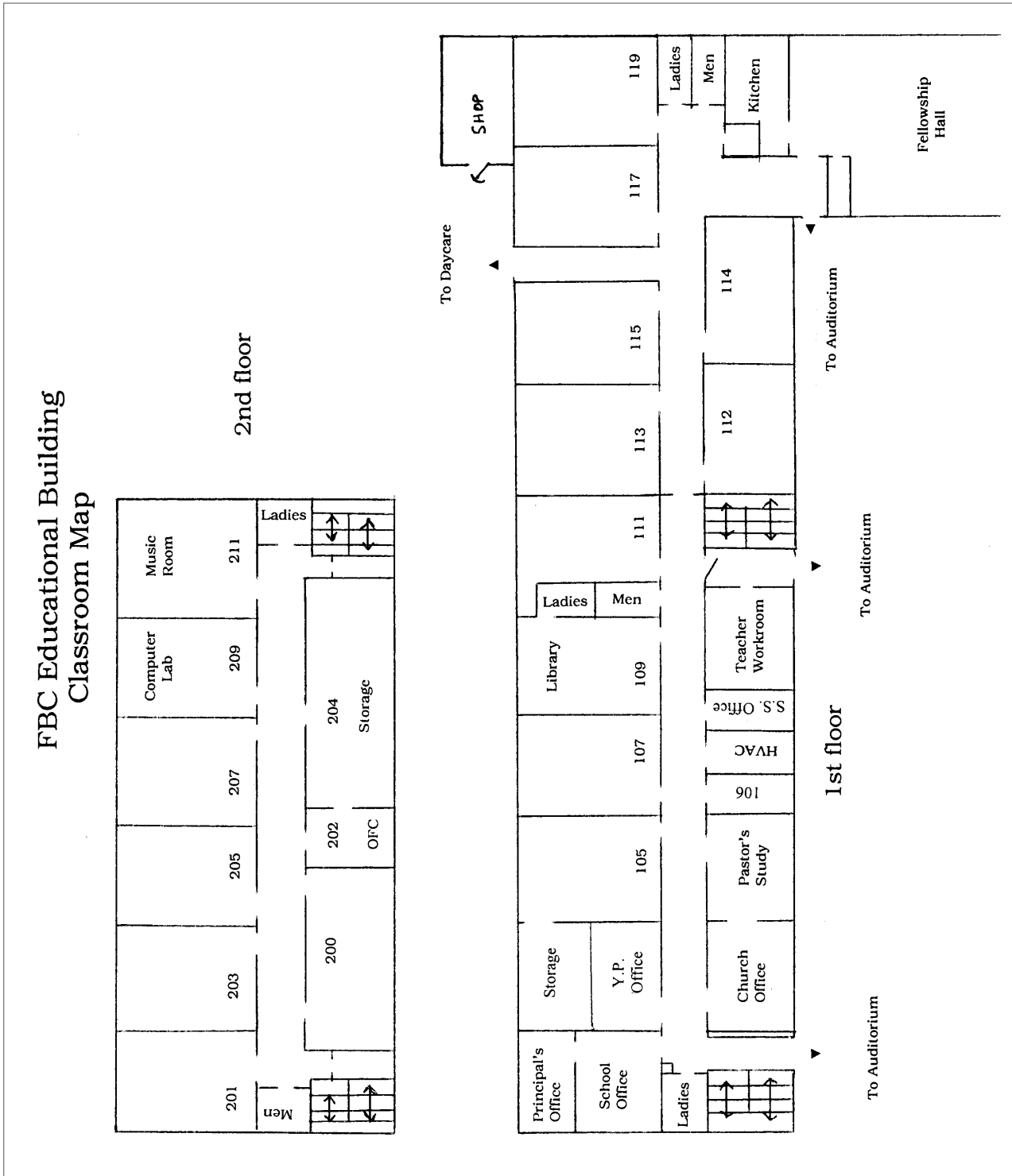


## Exterior/ Interior Pictures

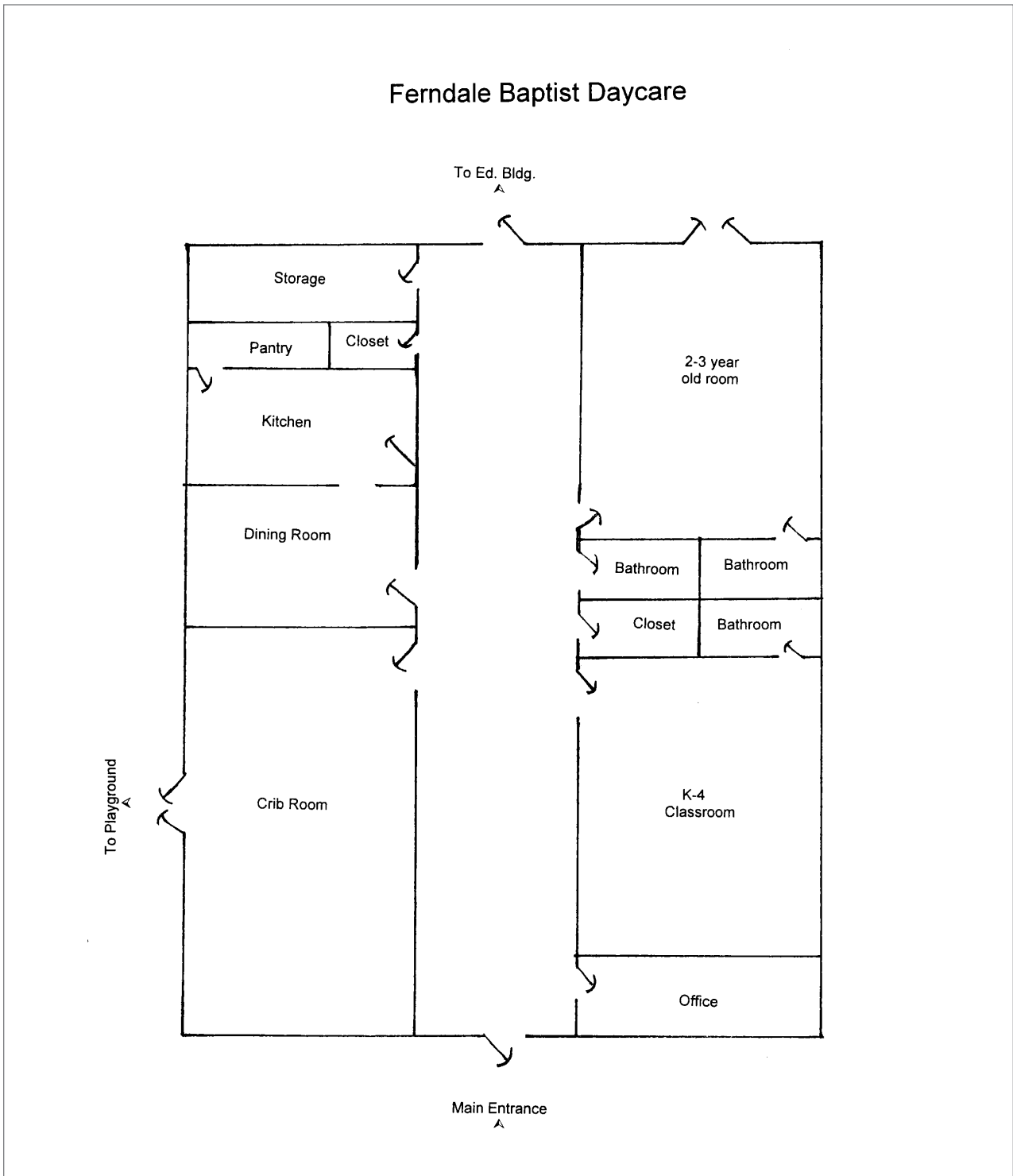
Although all information is furnished regarding for sale, rental or financing is from sources we deem reliable, such information has not been verified and no express representation is made nor is any to be implied as to the accuracy thereof, and it is submitted subject to errors, omissions, changes of price, rental or other conditions, prior sale, lease or financing, or withdrawal without notice.



Floor Plan - Not drawn to scale



Floor Plan - Not drawn to scale



Floor Plan - Not drawn to scale